



Operator's Manual



CONTENTS

| | |
|-----------------------------------|---------|
| Installation | Page 3 |
| Routine Maintenance | Page 6 |
| Warranty Statement and Guidelines | Page 7 |
| Staalmeester LS125 Slasher | Page 8 |
| Staalmeester LS150 Slasher | Page 10 |
| Staalmeester LS180 Slasher | Page 12 |
| PTOs | Page 14 |

These implements are:

- cost effective implements designed to work with older or lower powered tractors
- easy-to-use: a few clear instructions and safety tips and you can get to work
- ideal for the smallholder, emerging farmer and price-conscious buyer

Authorised Dealer:

Date of Sale:

Model No.:

Implement:

Serial No.:

INSTALLATION

It is essential that you adhere to the steps listed below. To ignore them will shorten the life of your implement and result in unnecessary expense.

1) **FILL THE GEARBOX WITH OIL TO THE CORRECT LEVEL**

Fill the gearbox to the correct level with good-quality gearbox oil. We recommend Fuchs Renolin CLP 1000, but EP90 can be used for topping up.

2) **CHECK THAT THE PTO SHAFT IS CORRECTLY SUITED TO YOUR TRACTOR**

The PTO shaft may have to be cut to the correct length to suit your tractor/Staalmeester combination. Too long a shaft can result in serious damage to your tractor, the implement, or the PTO shaft when the implement is either raised or lowered. Cutting the shaft too short may result in insufficient overlap and when under power, will start to vibrate, break or tear open, causing damage to the implement and tractor and injury to the operator.

Before using your tractor/Staalmeester combination ensure that the tractor hydraulic 3 point linkage control lever is set to the correct height setting in order not to pick up the implement too high as this will result in damage to the PTO shaft. Ensure that the PTO guard is in good order at all times.

3) **GREASE BOTH UNIVERSAL CROSSES OF THE PTO SHAFT**

No PTO shaft can operate without grease! It is essential that the two crosses of the shaft are fully greased initially and kept greased thereafter. Ensure that the grease pushes out of all four cups of each cross every time they are greased. Also grease the two sliding tubes.

4) IF A SLIP CLUTCH IS FITTED ADJUST THE SLIP CLUTCH TO THE CORRECT TORQUE

It is essential that these clutches are adjusted to the correct torque according to the manufacturers specifications. If the slip clutch is set too tight, the implement unit will have no protection against serious damage! If, on the other hand, the clutch is too loose, the friction clutch plates will soon burn out and will have to be replaced.

The slip clutch must be able to slip under an excessive load. This is best indicated by the temperature of the clutch housing which should, after an hour or two, be about the same as that of the gearbox.

If too hot, the clutch is slipping too much, in which case you should tighten the clutch spring nuts until the correct pressure is established. Tighten by a quarter turn on each spring.

If too cold, the clutch is not slipping at all. It is then necessary to loosen the clutch spring nuts until the correct pressure is reached. If the slip clutch still fails to slip, it may be that the slip clutch is due for a service as the friction plates are rusted causing them to bind together.

All implements are designed to run at 540 rpm. The implement should be raised above the material that is to be cut and then the tractor PTO is to be engaged. Once engaged, the rpm should be increased to 540 and then maintained while cutting. Failing to do this will increase the torque levels on both the tractor and the implement, resulting in a shorter slip clutch life.

5) ADJUST THE TRACTOR TOP LINK TO THE CORRECT LENGTH

It is important to adjust your tractor top link so that the implement topmast is in the vertical position when the implement is resting on the level ground and the lifting chains should be slack to allow articulation.

6) CHECK AND TIGHTEN ALL BOLTS

Check that all bolts are fully tightened before use and then again after the first few hours of use. It is very important that the bolts on the cutting gear are checked and tightened frequently.

7) TAKE NOTE OF THE SAFETY RULES

Please instruct your driver to adhere to the following rules:

- a) Do not get off the tractor while it is running. Ensure that the tractor is turned off before making any adjustments.
- b) When working under the implement, changing the blades or tightening the bolts, the frame should be lowered on to a stand, a prop or the ground.
- c) Be aware of any obstruction such as stumps, stones, bottles, tins, etc. Remove these from the field before commencing work or at least avoid them.
- d) Discourage spectators and never carry passengers. Remember, it is possible that small stones can fly out at high speed. These projectiles can cause serious injury.
- e) Do not allow anyone to walk near the implement while it is operating.
- f) Operate the tractor in such a way that you establish and maintain the optimum PTO speed of approximately 540 rpm. Too low a speed will overload the drive shaft system. Too high a PTO speed will make the operation dangerous.
- g) Do not allow anyone to put their hands or feet under the implement while the tractor is running.
- h) Do not remove the protective covers around the PTO shaft or flaps provided on the implement.
- i) Do not subject the topmast chains to excessive strain by transporting the implement at high speeds over rough ground. Inspect the chains and shackles regularly and replace if worn. Use only chains and shackles of the correct specification.

ROUTINE MAINTENANCE

1) DAILY CHECKS

- a) Check that all bolts, nuts and screws are tight. Checking the bolts and nuts on the cutting gear is particularly important.
- b) Check the level of the gearbox oil and top up to the correct level. Check for gearbox oil leaks. It should be noted that no warranty claim can be submitted on a gearbox that has run dry. It is thus essential that the gearbox is kept filled to the correct level with the specified grade of lubricant.
- c) Grease the PTO shaft.
- d) Check that the bolt securing the slip clutch to the gearbox is tight, as a loose slip clutch will eventually cause the input shaft to fail.
- e) Check the wear on the blades. Sharpen them routinely with an angle grinder or replace when they are worn down too far. We recommend that you keep at least two sets of blades, bolts, nuts and bushes as spares for your implement. Make sure that the cutting gear is balanced, i.e. that the blades display similar wear patterns and are of similar weight. When changing the blades, in order to ensure safety, it is recommended that new bolts and nuts are fitted each time.

2) REGULAR CHECKS

- a) Check that the slip clutch is set to the correct tension and adjust accordingly if not.

- b) Check the wear on the steel skid runners, and replace if necessary.
- c) Clean down and touch up any rust spots that may have appeared.

NOTE: Vibration is the main cause of structural failure and excessive bearing wear on rotary cutters.

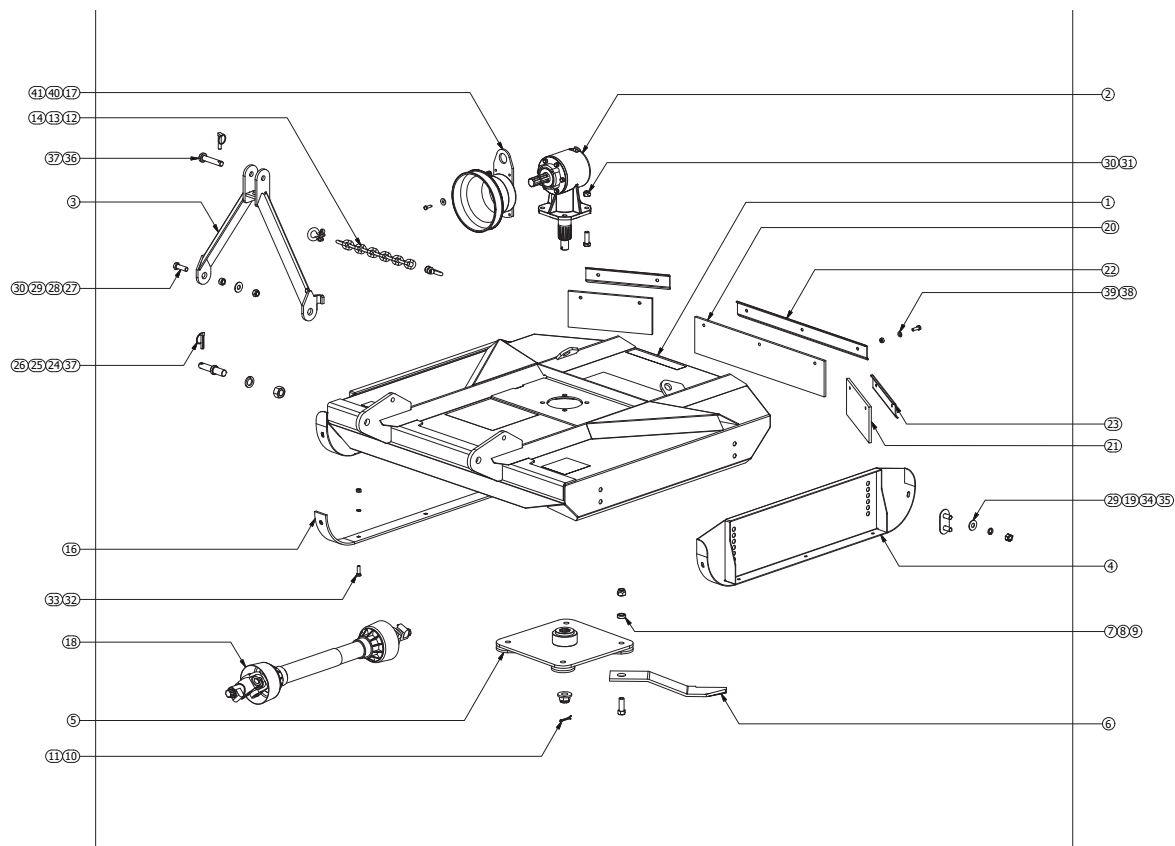
WARRANTY STATEMENT AND GUIDELINES

In the unlikely event of a failure of a component, and provided the implement concerned was installed, maintained and operated in accordance with the instructions contained in the operator's manual, Staalmeester undertakes to correct, repair or replace the component during the warranty period as stipulated for the implement concerned. The warranty period is 12 months. Please visit www.staalmeester.co.za for more information.

LIMITATIONS

The warranty does not cover damage due to misuse or incorrect application. Normal wear and tear, consequential damage and transport of the implement are also excluded.

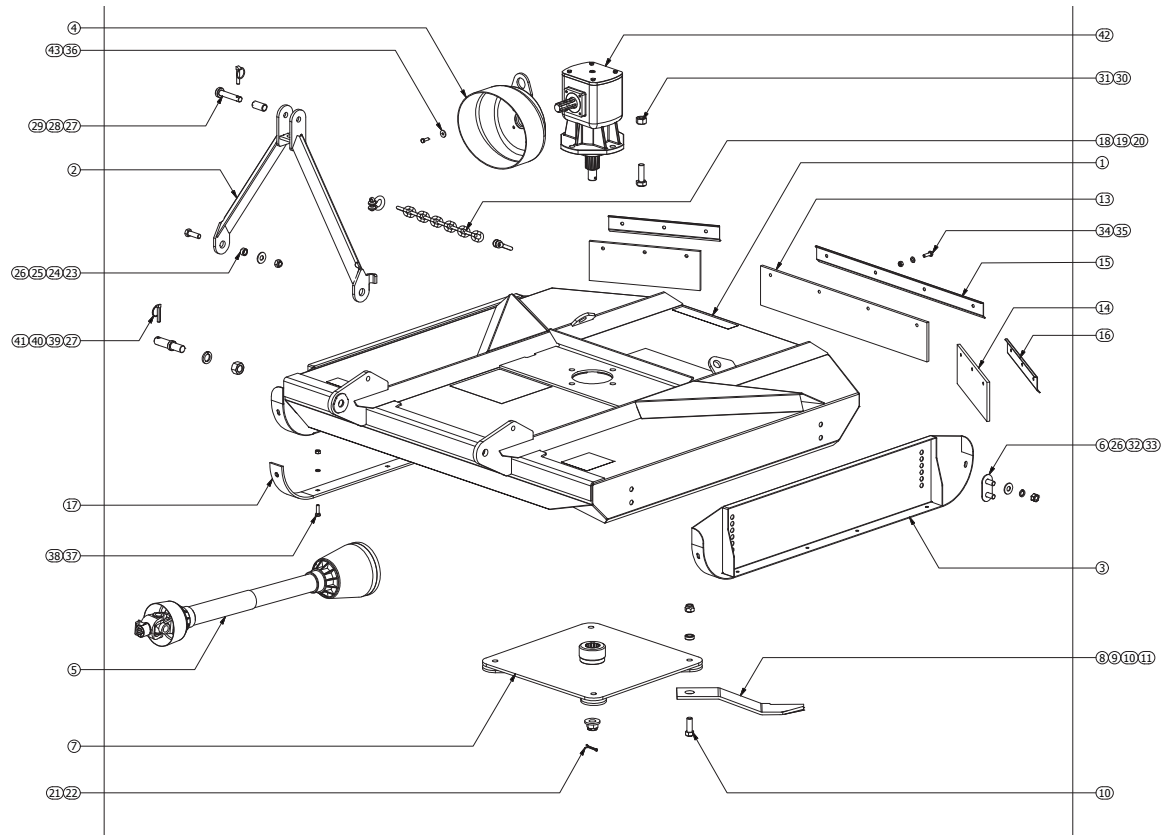
Staalmeester LS125 Slasher



Staalmeester LS125 Slasher

| Item | Part No. | Description | Qty | Item | Part No. | Description | Qty |
|------|---------------|---|-----|------|----------|--|-----|
| 1 | H9261F | Painted Hull 1.25 Staalmeester (JDYellow) | 1 | 33 | M91002 | Washer Spring M10 Galv | 10 |
| 2 | M1100 | Gearbox 1:1.93 F25 Comer | 1 | 34 | M31612 | Nut M16 Galv | 8 |
| 3 | H9230 | Top mast L100/125/125R | 1 | 35 | M91604 | Washer Spring M16 Galv | 8 |
| 4 | H9269F | Side Panel Complete 1.25m Staalmeester(CasellH Red) | 2 | 36 | H0631 | Pin Top link Cat1 | 1 |
| 5 | H9277A | Disc L125/L125R | 1 | 37 | FLP11 | Linchpin 11.0mm | 3 |
| 6 | H1507 | Blade 10x100x450-32.5 | 4 | 38 | M11030 | Bolt M10x30 + Nut Galv | 7 |
| 7 | H71911 | Bush 19x32x11 | 4 | 39 | M81002 | Washer Flat M10 | 7 |
| 8 | M51957 | Bolt 3/4"UNCx2-1/2" | 4 | 40 | M8576 | Washer M8x20x3 | 4 |
| 9 | M61920 | Nut Nyloc 3/4" UNC | 4 | 41 | M40825 | Bolt M8x25 HT Galv | 4 |
| 10 | M1416 | Split pin B5x60 | 1 | 42 | M3178 | Decal Blade/Lem | 1 |
| 11 | LF13582200515 | Nut Slotted M24x2 | 1 | 43 | M3360 | Decal CAUTION WAARSKUWING Warranty Condition | 1 |
| 12 | H9276 | Chain 3.0t 9mm L125/125R | 1 | 44 | M3172 | Decal DANGER STAY AWAY - ROTATING..... | 1 |
| 13 | M0620 | Shackle 9mm | 2 | 45 | M3173 | Decal Lifting hook | 1 |
| 14 | M0622 | Shackle 7/16" 1.5t | 1 | 46 | M3362 | Decal LS125 Slasher | 1 |
| 15 | M3361 | Decal Staalmeester | 1 | | | | |
| 16 | H9271 | Skid runner 8.0x60 | 2 | | | | |
| 17 | H9238A | PTO guard L100/L125/L125R | 1 | | | | |
| 18 | FB410SZ | PTO shaft B4-1.0m QR | 1 | | | | |
| 19 | H9224 | Retainer | 4 | | | | |
| 20 | M9272 | Flap Centre L125 | 1 | | | | |
| 21 | M9273 | Flap Side L125 | 2 | | | | |
| 22 | M9274 | Flap retainer Centre L125 | 1 | | | | |
| 23 | M9275 | Flap retainer Side L125 | 2 | | | | |
| 24 | H0641 | Pin Mount Cat1 1"UNF | 2 | | | | |
| 25 | M92605 | Washer Spring 1" | 2 | | | | |
| 26 | M32515 | Nut 1" UNF | 2 | | | | |
| 27 | M41650 | Bolt M16x50 HT Galv | 2 | | | | |
| 28 | H71613 | Bush 16x25x13 | 2 | | | | |
| 29 | M81603 | Washer M16x40x3.0 | 10 | | | | |
| 30 | M61616 | Nut Nyloc M16 | 6 | | | | |
| 31 | M41645 | Bolt M16x45 HT Galv | 4 | | | | |
| 32 | M21030 | Plough bolt M10x30 + Nut Galv | 10 | | | | |

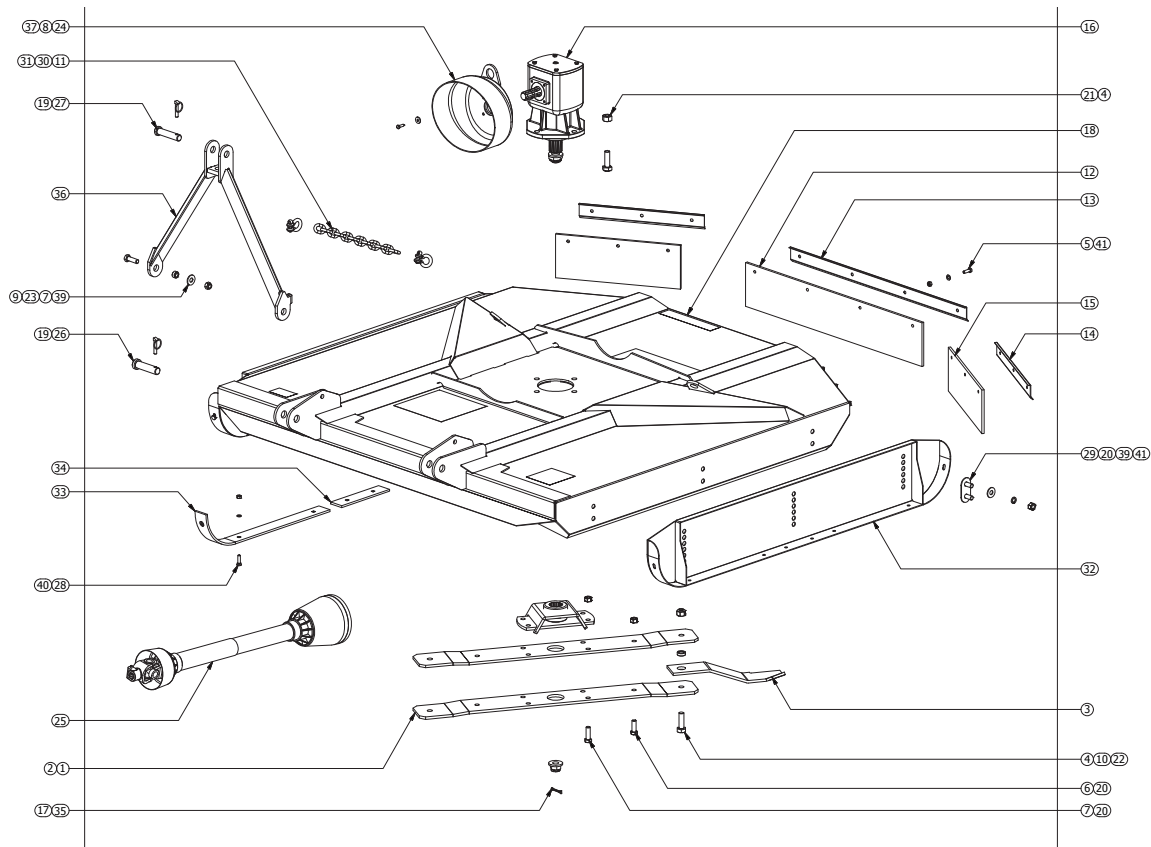
Staalmeester LS150 Slasher



Staalmeester LS150 Slasher

| Item | Part No. | Description | Qty | Item | Part No. | Description | Qty |
|------|------------|---|-----|------|----------|--|-----|
| 1 | H9311F | Painted Hull 1.5m Staalmeester (JDYellow) | 1 | 33 | M91604 | Washer Spring M16 Galv | 8 |
| 2 | H9329 | Top mast L150 | 1 | 34 | M11030 | Bolt M10x30 + Nut Galv | 10 |
| 3 | H9322F | Side Panel Complete 1.5m Staalmeester(CaselH Red) | 2 | 35 | M81002 | Washer Flat M10 | 10 |
| 4 | H9335 | PTO guard L150/L180 | 1 | 36 | M8576 | Washer M8x20x3 | 4 |
| 5 | FB612SFF | PTO shaft B6-1.2m F2 | 1 | 37 | M21030 | Plough bolt M10x30 + Nut Galv | 12 |
| 6 | H9224 | Retainer | 4 | 38 | M91002 | Washer Spring M10 Galv | 12 |
| 7 | H9338 | Disc | 1 | 39 | H0642 | Pin Mount Cat2 1"UNF | 2 |
| 8 | H1507 | Blade 10x100x450-32.5 | 4 | 40 | M32515 | Nut 1" UNF | 2 |
| 9 | H71911 | Bush 19x32x11 | 4 | 41 | M92605 | Washer Spring 1" | 2 |
| 10 | M51957 | Bolt 3/4"UNCx2-1/2" | 4 | 42 | M1203 | Gearbox 1:1.93 F40 Comer | 1 |
| 11 | M61920 | Nut Nyloc 3/4" UNC | 4 | 43 | M40825 | Bolt M8x25 HT Galv | 4 |
| 12 | M3361 | Decal Staalmeester | 1 | 44 | M3360 | Decal CAUTION WAARSKUWING Warranty Condition | 1 |
| 13 | M9325 | Flap Centre L150 | 1 | 45 | M3172 | Decal DANGER STAY AWAY - ROTATING..... | 1 |
| 14 | M9326 | Flap Side L150 | 2 | 46 | M3173 | Decal Lifting hook | 1 |
| 15 | M9327 | Flap retainer Centre L150 | 1 | 47 | M3363 | Decal LS150 Slasher | 1 |
| 16 | M9328 | Flap retainer Side L150 | 2 | | | | |
| 17 | H9324 | Skid runner 8.0x60 | 2 | | | | |
| 18 | H9333 | Chain 3.0t 9mm L150 | 2 | | | | |
| 19 | M0620 | Shackle 9mm | 2 | | | | |
| 20 | M0622 | Shackle 7/16" 1.5t | 1 | | | | |
| 21 | 0140710200 | Nut slotted M30x2 | 1 | | | | |
| 22 | M1416 | Split pin B5x60 | 1 | | | | |
| 23 | H71613 | Bush 16x25x13 | 2 | | | | |
| 24 | M41650 | Bolt M16x50 HT Galv | 2 | | | | |
| 25 | M61616 | Nut Nyloc M16 | 2 | | | | |
| 26 | M81603 | Washer M16x40x3.0 | 10 | | | | |
| 27 | FLP11 | Linchpin 11.0mm | 3 | | | | |
| 28 | H0631 | Pin Top link Cat1 | 1 | | | | |
| 29 | FS353 | Bush Top link Cat1>Cat2 | 1 | | | | |
| 30 | M41963 | Bolt 3/4"UNFx2-1/2" | 4 | | | | |
| 31 | M61919 | Nut Nyloc 3/4"UNF | 4 | | | | |
| 32 | M31612 | Nut M16 Galv | 8 | | | | |

Staalmeester LS180 Slasher



Staalmeester LS180 Slasher

| Item | Part No. | Description | Qty | Item | Part No. | Description | Qty |
|------|------------|---|-----|------|----------|--|-----|
| 1 | M9470 | Beam L180 | 2 | 33 | H9465 | Skid runner 8.0x60 | 4 |
| 2 | H9466 | Adaptor Beam | 1 | 34 | H9464 | Spacer Skid runner 8.0x60 | 2 |
| 3 | H1507 | Blade 10x100x450-32.5 | 2 | 35 | M1416 | Split pin B5x60 | 1 |
| 4 | M41963 | Bolt 3/4"UNFx2-1/2" | 6 | 36 | H9469 | Top mast L180 | 1 |
| 5 | M11030 | Bolt M10x30 + Nut Galv | 10 | 37 | M8576 | Washer M8x20x3 | 4 |
| 6 | M41645 | Bolt M16x45 HT Galv | 2 | 38 | M81002 | Washer Flat M10 | 10 |
| 7 | M41650 | Bolt M16x50 HT Galv | 6 | 39 | M81603 | Washer M16x40x3.0 | 14 |
| 8 | M40825 | Bolt M8x25 HT Galv | 4 | 40 | M91002 | Washer Spring M10 Galv | 16 |
| 9 | H71613 | Bush 16x25x13 | 2 | 41 | M91604 | Washer Spring M16 Galv | 12 |
| 10 | H71911 | Bush 19x32x11 | 2 | 42 | M3178 | Decal Blade/Lem | 1 |
| 11 | H9480 | Chain 3.0t 9mm L180 | 2 | 43 | M3360 | Decal CAUTION WAARSKUWING Warranty Condition | 1 |
| 12 | M9474 | Flap Centre L180 | 1 | 44 | M3172 | Decal DANGER STAY AWAY - ROTATING..... | 1 |
| 13 | M9472 | Flap retainer Centre L180 | 1 | 45 | M3173 | Decal Lifting hook | 1 |
| 14 | M9473 | Flap retainer Side L180 | 2 | 46 | M3364 | Decal LS180 Slasher | 1 |
| 15 | M9475 | Flap Side L180 | 2 | 47 | M3361 | Decal Staalmeester | 1 |
| 16 | M1203 | Gearbox 1:1.93 F40 Comer | 1 | | | | |
| 17 | 0140710200 | Nut slotted M30x2 | 1 | | | | |
| 18 | H9450F | Hull Painted L180 Staalmeester (JDYellow) | 1 | | | | |
| 19 | FLP11 | Linchpin 11.0mm | 3 | | | | |
| 20 | M31612 | Nut M16 Galv | 18 | | | | |
| 21 | M61919 | Nut Nyloc 3/4"UNF | 4 | | | | |
| 22 | M61921 | Nut Nyloc 3/4"UNC CSK | 2 | | | | |
| 23 | M61616 | Nut Nyloc M16 | 2 | | | | |
| 24 | H9335 | PTO guard L150/L180 | 1 | | | | |
| 25 | FB612SFF | PTO shaft B6-1.2m F2 | 1 | | | | |
| 26 | H0643 | Pin Bottom link Cat2 | 2 | | | | |
| 27 | H0632 | Pin Top link Cat2 | 1 | | | | |
| 28 | M21030 | Plough bolt M10x30 + Nut Galv | 16 | | | | |
| 29 | H9224 | Retainer | 6 | | | | |
| 30 | M0622 | Shackle 7/16" 1.5t | 2 | | | | |
| 31 | M0625 | Shackle 5/8" 2t | 1 | | | | |
| 32 | H9463F | Side panel L180 Staalmeester(CaselH Red) | 2 | | | | |

Notes

.....

.....

.....

.....

.....

.....

.....

.....

.....

.....

.....

Notes

.....

.....

.....

.....

.....

.....

.....

.....

.....

.....

.....

Phone: +27 18 431 0300

Fax: +27 18 431 0185

Email: info@staalmeester.co.za

www.staalmeester.co.za

Staalmeester Head Office

2 Coetzee Street, Hartbeesfontein, South Africa